

CSME Summer Camp 2026 Camper Dress Code

We have received many questions pertaining to camper dress code while at CSME Summer Camp. Below is an updated guideline to assist you and your camper with packing. Please read the following carefully with your camper. ***It contains pertinent information including our Dress Code Violation Policy.***

Why a Dress Code Policy?

Every day while at Camp St. Mary of Egypt, campers participate in Church services, spiritually edifying discussions, concentrated time with clergy that includes opportunities for confession, and activities geared around fun and fellowship with their Orthodox peers. Thus, while we recognize that camping is of its nature informal, Christian modesty should be the guiding principle when packing for CSME Summer Camp. Please take the time to carefully read the following guidelines with your camper to ensure that expectations are clear on what is appropriate to pack for camp.

What TO Wear

Daily wear: the best clothes to pack for daily wear at camp are a loose-fitting t-shirt and either long pants, capris, long shorts, or knee-length-or-lower skirts.

Swimwear: Girls: One-piece swimsuits, tankinis, or swim shorts that cover the midriff.

Boys: Swim trunks that fit well at the waist (be mindful of length and fit)

Church Service Attire: for daily services, camp clothing is fine, although sleeveless shirts are never allowed during church services (either boys or girls). We will have Divine Liturgy once during the camp week, and for that we ask that you pack one nice “church” outfit—Dress, skirt, or dress pants with a blouse for girls, slacks/dress pants (no jeans) and a nice shirt for boys. There will be time to change into regular “camp clothes” after breakfast on Liturgy day.

Footwear: part of the fun of camp is all the activities and you need to wear the right shoes. Close-toed shoes are a must for all Activity Sessions and Team Time Activities. Sneakers, athletic shoes, or water shoes with a back-strap are best (flip flops are best kept for showers).

Weather and Cool Evenings: It is generally in the 80’s during the summer season. Evenings can be cool, so layers are a must. Especially since many of our evening/night activities are outside and campers who are not layered tend to get cold.

What NOT to Wear

Clothing that is **NOT CSME Camp-appropriate** for campers of any age:

Tops: Open back tops, low-cut fronts, skin tight tops, spaghetti-strap, racer-back, and thin strap tank tops, and mesh or undershirt tank tops will not be permitted.

Swimming Attire: Bikini bathing suits (*tankinis are permitted as long as the midriff is completely covered*), speedos, and sagging or skin tight swim trunks will not be permitted. **NEW - Boys must wear shirts at all times including water activities!**

Dresses: Hem must hit at knee length or below. **This applies to both services AND the camp dance**

Bottoms: Shorts cut shorter than a few inches above the knee or shorts with any rips in them or holes in them will not be allowed at camp. Low-cut waistlines, and sagging shorts that expose boxers/underwear will not be permitted.

Leggings worn as pants are not permitted at camp (leggings may be worn under a dress for services). REGARDLESS OF CAMPER AGE

Jeans with tears above the knee that expose skin will not be permitted. Note that shorts with any tears/rips of any kind are not allowed at camp.

Images/Logos/Wording: Clothing items or other personal items that contain inappropriate language, images, logos, pop icons and/or any messages not in line with traditional Orthodox teachings will not be permitted.

Body Piercings/Tattoos: Excess earrings and other body piercings must be removed prior to admittance to camp. Tattoos should be covered at all times while at camp to the best of the camper's ability.

Hats: Baseball caps and beanies, while acceptable to wear when engaging in camp activities, will not be permitted during Church services.

Dress Code Violations

Any camper wearing attire that blatantly violates the Dress Code Policy set forth above, will be immediately escorted to his/her cabin to change by either his/her counselor or the Camp Director. If the camper has not packed alternative, camp-appropriate attire in which to change, the Camp Director will contact his/her parent/guardian and ask that they bring appropriate attire to the camper. Campers may not return to normal camp activities until they are dressed appropriately. **Repeated**

violations of the dress code policy will result in dismissal from camp.

Examples of Appropriate vs Inappropriate Attire

Outside of the attire that has been expressly stated as not permissible at camp, the following images are intended to act as helpful examples only and not rigid guides. We understand that God has made us each uniquely beautiful and recognize that it can be challenging to find clothing for summer camp with our varying heights, shapes, and sizes. The most important thing is to dress in the spirit of modesty and make your best effort to follow the guidelines set forth in this guide.

The Long and Short of It

A Guide for CSME Summer Camp Short Lengths



Acceptable lengths for Camp

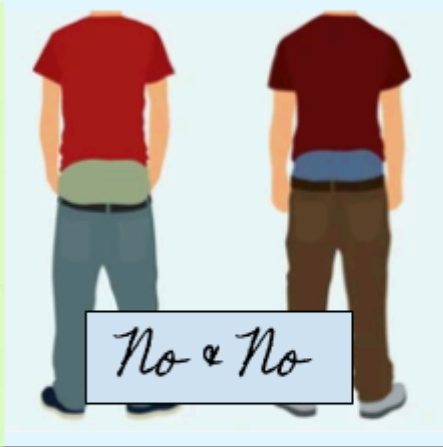
Same the Year

A Guide for CSME Summer Camp Worn Jeans



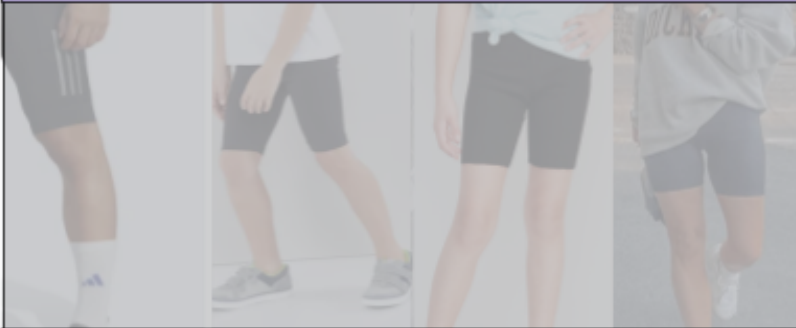
How to Wear Pants

At CSME Summer Camp



Bridle the Biker Shorts

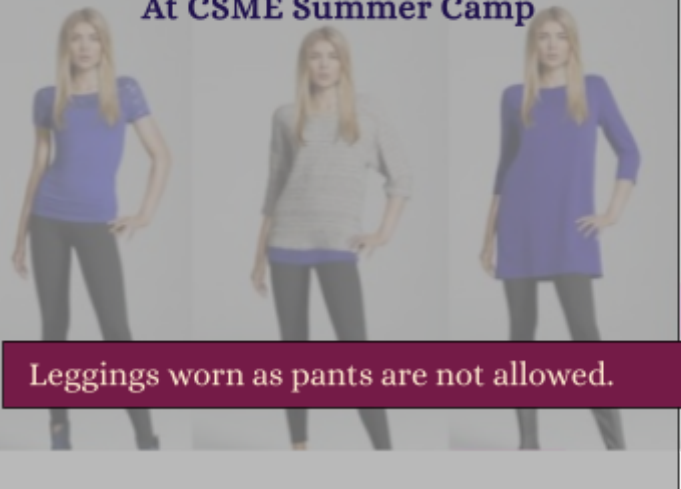
During CSME Summer Camp



No spandex or biker shorts allowed at camp

Lose the Leggings

At CSME Summer Camp



How to Don a Dress

